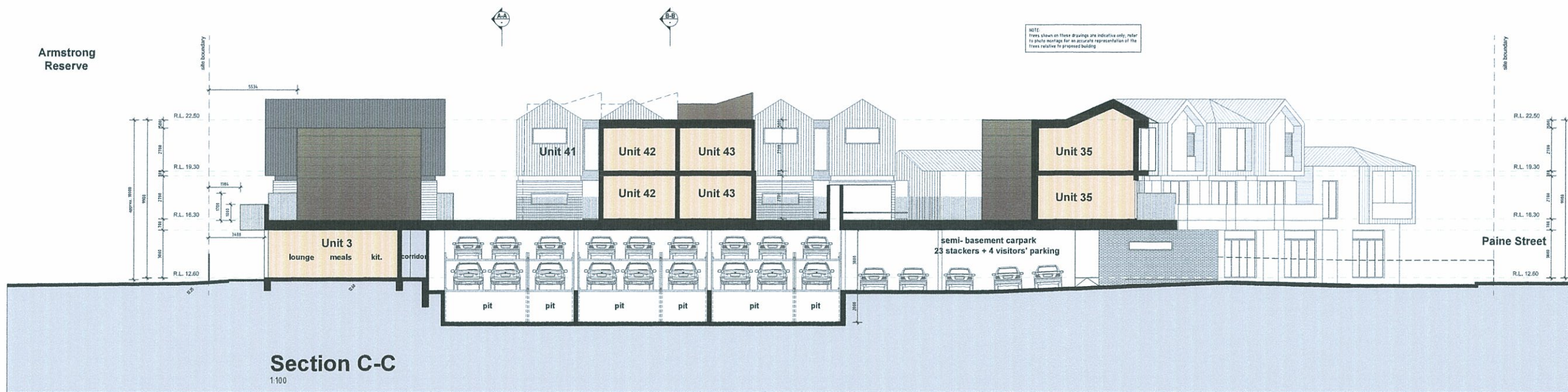




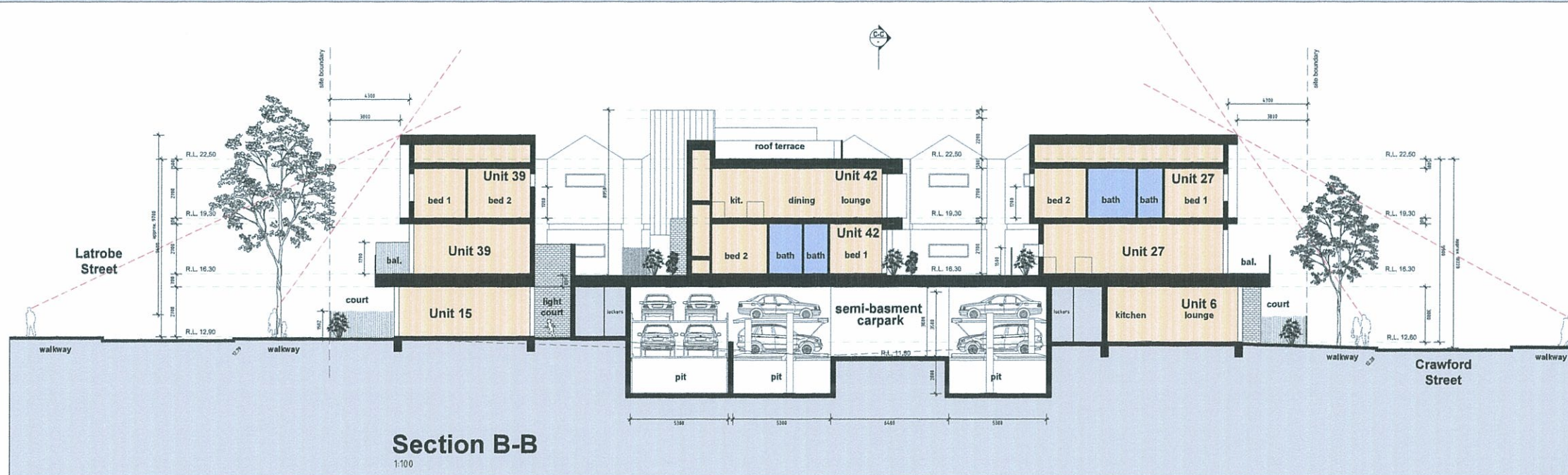
Armstrong Reserve Elevation - North West
1:100

Material Schedule

- (M1) White metal cladding
- (M2) Grey metal cladding
- (M3) White weatherboard cladding
- (M4) Grey weatherboard cladding
- (M5) timber cladding / slats
- (M6) selected face bricks
- (M7) aluminium framed glass windows / doors (black)
- (M8) grey render finish
- (M9) steel channel fascia
- (M10) clear glass balustrade
- (M11) Timber picket balustrade/ence



Section C-C
1:100



Section B-B
1:100

REVISION	DATE	CAD FILE	CHECKED	DATE	CAD FILE

This drawing is copyright and confidential and is not to be reproduced or used in any manner without the written permission of Kavellaris Urban Design. All dimensions are in millimetres unless otherwise specified. In the event that there are any errors or discrepancies in the drawings the contractor must contact us to rectify them prior to commencement of works.

DRAWING LEGEND:
 WD - WORKING DRAWINGS
 TI - TENDER ISSUE - NOT FOR CONSTRUCTION
 TP - TOWN PLANNING
 SK - SCHEMATIC DESIGN
 DD - DESIGN DEVELOPMENT

KAVELLARIS URBAN DESIGN
 ARCHITECTURE INTERIOR PLANNING LANDSCAPE CIVIL ENGINEERING PROJECT No
 13 Victoria Parade, Coleraine NSW - VIC Australia
 Tel: +61 8 9417 1114 Fax: +61 8 9417 1119
 enquiry@kav.com.au www.kav.com.au

11-0022

Proposed Elevations & Sections
 ADDRESS:
 6 Paine Street, Newport
 CLIENT:
 Domain Hill Pty.Ltd

DATE: 20/12/2012 SCALE: 1:100@A0 REV: - SHEET: TP09 REASON FOR ISSUE: TP